



Enriching Lives

"Kirloskar Green" Gensets

E Series

Single & Three Phase
Air Cooled & Liquid Cooled
Silent Genset



Range 5 to 20 kVA



Salient Genset Features

■ Customized product range :

- Ready to use gensets, available in wide range from 5 to 20 kVA.
- Gensets powered with Air Cooled & Liquid Cooled engines.
- Custom built tailored to meet your exact power needs.

■ Smart Aesthetics :

- State of the Art Design.
- Compact in size, smaller footprint saving money on space.
- Aesthetically superior, fully integrated weather proof acoustic enclosure.
- Light weight design.

■ Environment Friendly :

- The power to save environment and the earth.
- Gensets conform to low noise emission norms as per CPCB.
- Engine complies with latest stringent international emission norms.

■ Highest Reliability :

- Utmost reliability ensuring continuous power for smooth operation.
- Extremely rugged, durable design.
- Low lifecycle cost.
- Safety for low lube oil, high water temperature, low fuel level etc.
- State-of-the-art technology for operations in low / high ambient temperature, high humidity and high altitude.

■ Unmatched Performance :

- Low fuel & lube oil consumption ensuring excellent economy.
- Low noise & vibration levels.
- High fuel efficiency at part operating load.
- Lowest power to weight ratio in its class.
- No oil top up required between two services.
- K-cool super plus for longer life.

■ Maintenance friendly design, ease of operation :

- Ready to use design.
- Easy serviceability for routine maintenance, replacement, overhaul.
- Modular design, ensuring lower maintenance cost.
- Ensures long maintenance intervals.
- Easy availability of spare parts.
- Minimum cost for maintenance, spares & services.
- Smart Genset Monitor Control (GMC) for closely monitoring the engine, genset & safety system.
- Annual maintenance contract through service dealers.
- PAN India single point AMC.



KIRLOSKAR
GREEN
POWER IDEAS

Standard Features

■ Engine



- Air Cooled & Liquid Cooled technology
- Offering a wide comprehensive range with power output covering from 5 to 20 kVA
- Available in 1 & 2 cylinder configuration
- Most compact, extremely robust & rugged design
- 500 Hrs. oil change period
- Lowest fuel consumption in it's class
- Meets latest emission norms

■ Alternator



- Kirloskar Green Alternator
- Compact Design
- Best in Class Efficiency
- Positive Voltage built-up
- Special windings to reduce harmonics
- Electronic AVR
- High circuit current capacity upto 300% ensuring controlled regulation even at variable loads
- Epoxy gel coating to suit various environment conditions

■ Control Panel



- State-of-the-art engine & genset monitoring and safety system
- Safety controls for low coolant level in radiator and high canopy temperature
- Compact Microprocessor Controller
- All performance parameters of engine & DG set visible at one sight

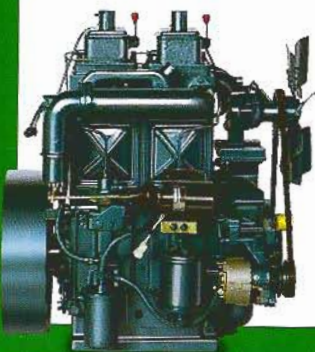
■ Canopy



- State-of-the-art Kirloskar Green Design
- Weather proof, sound proof enclosure meets latest CPCB norms
- The powder-coated enclosure is manufactured on high-tech CNC machines to ensure smart quality finish & life long durability
- Specially designed to operate at full load, even at 50 deg C air inlet temperature
- Insulation material conforms to UL94HF1 class for flammability
- Use of zinc plating with green passivated hardware to withstand salt spray test as per ASTM B-117

Optional Features

- Remote monitoring
- Additional electrical metering
- Auto Mains Failure panel
- Cold starting aid
- Electronic Governor
- Parallel operations for Genset
- 24V ES in lieu of 12V
- Special air filtration system for dusty atmosphere
- Facility for external agency inspection
- Bio diesel operations & many more



Technical Data

Overall Specifications of E Series Genset

Range 5 to 20 kVA

DG Set Specifications

Parameters	Unit	Genset Model						
		SEKG5AS7	SEKG7.5AS5	SEKG10AS5	SEKG12.5AS6	SEKG15AS6	SEKG15WS10	SEKG20WS8
kVA (kW) rating at 0.8pf	kVA (kW)	5 (4)	7.5 (6)	10 (8)	12.5 (10)	15 (12)	15 (12)	20 (16)
Voltage	V	415	415	415	415	415	415	415
Frequency	Hz	50	50	50	50	50	50	50
Overall dimensions with canopy	mm (LxBxH)	1600 x 820 x 1530	2070 x 820 x 1540	2070 x 820 x 1540	2070 x 820 x 1540	2070 x 820 x 1540	2240 x 820 x 1385	2240 x 820 x 1385
Dry weight of genset with canopy	kg	650	850	850	900	900	1050	1050
Electrical starting system		12	12	12	12	12	12	12
Battery capacity	Ah	88	88	88	88	88	88	88
DG set noise level as per CPCB norms	dB(A)	<75	<75	<75	<75	<75	<75	<75
Engine coolant capacity	Ltrs	-	-	-	-	-	10	10

Engine Specifications

Parameters	Unit	Engine Model						
		EA10	EA16	EA16	EA20	EA20	EW24	EW28
Rated output (prime continuous rating) as per ISO 3046	kW (hp)	7.35 (10)	11.76 (16)	11.76 (16)	14.72 (20)	14.72 (20)	17.66 (24)	20.58 (28)
No of Cylinders	No's	1	2	2	2	2	2	2
Bore x Stroke	mm	102 x 116	95 x 110	95 x 110	102 x 116	102 x 116	102 x 116	114.3 x 116
Aspiration	NA/T/TA	NA	NA	NA	NA	NA	NA	NA
Governing		Class A2	Class A2	Class A2	Class A2	Class A2	Class A2	Class A2
Break mean effective pressure	kg/cm ²	6.33	6.27	6.27	6.33	6.33	7.74	7.14
*SFC at 75 % load	gms/hp-hr	164.5	168	168	167	167	158	156
*SFC at 100 % load	gms/hp-hr	165.5	169.6	169.6	168.7	168.7	159.5	158
Lube oil consumption	Ltrs/hr	0.5% of SFC max	0.5% of SFC max	0.5% of SFC max	0.5% of SFC max	0.5% of SFC max	0.5% of SFC max	0.5% of SFC max
Lube oil change period	Hrs	500	500	500	500	500	500	500
Lube oil sump capacity	Ltrs	3.75	6	6	6	6	6	6.5

Alternator Specifications

Parameter	Unit	Alternator Model						
		KG 164E	KG 164F	KG 164G	KG 164H	KG 164J	KG 164J	KG 184A
Specifications		5 kVA	7.5 kVA	10 kVA	12.5 kVA	15 kVA	15 kVA	20 kVA
Insulation Class		H	H	H	H	H	H	H
Time permitted to build up rated voltage at rated RPM	sec	<5	<5	<5	<5	<5	<5	<5
Permissible voltage dip @Full load 0.8pf lag	%	<18	<18	<18	<18	<18	<18	<18
Alternator efficiency at 100% load	%	78.5	80	82	83	83.5	83.5	87.1
Alternator efficiency at 75% load	%	79.7	81.8	84.4	84.6	84.9	84.9	88.5

In view of continuous product updation and design changes, all above specifications and dimensions are subject to change without prior notice.

Notes :

- Genset ratings are as per ISO 8528 performance class G2.
- Prime Power Rating is the maximum power available continuously for a variable electrical load for unlimited number of hours per year under standard operating conditions.
- Single phase genset option available up to 20 kVA.
- For the site conditions other than standard operating conditions, consult KOEL for available prime power.
- Specific gravity of diesel to be considered as 0.845 (+5 % tolerance as per ISO 3046).
- All canopy dimensions have tolerance of + 50 mm.
- * Under standard test conditions (+5% tolerance)



Customer Care :

Round the clock, at your service, whenever & wherever you need.

After sales service is the key to the long-term viability of any business. We are committed to provide adequate after sales service support & believe in creating enduring relationship with every individual customer we serve. Kirloskar believes in the wise saying "think global & act local" with full dedication, which have helped us, successfully achieve "100 years of great service".

Service Offerings

- Free service checks.
- Authorized Kirloskar Service Dealers in your neighborhood to promptly respond to your service calls, provide extensive after sales support including operational, maintenance & repair contract.
- Single window service for Genset & Customised AMC.
- 24/7 help line service for all our customers, offering timely customer support to deal with inquiries.
- Fully implemented CRM module to provide proactive & quick service response.
- Trained & experienced service team to provide value-added support to the highest standards ensuring customer satisfaction at all times.
- Support systems like Mean Time to Restore, Engine Down Order, First Pick Availability for maximum uptime of Gensets.
- K-oil / K-cool super plus for product life extension.
- Excellent product support through easy availability of spare parts, product training, Re-conditioning and warranty administration.
- Easy and Quick delivery... anywhere anytime.

Service Network across the Nation

Where your business operations are far reaching across the country & moreover when they are located in absolute remote places, your business counts on reliability & availability ensuring minimum downtime. Key to the quality of our after sales service is our strong service force, which are always ready to attend your calls anywhere anytime.



Help Desk :

Call 1800 233 3344 (Toll-free from BSNL / MTNL)
020-6608 4608 (Other than BSNL / MTNL)

Customer assistance is also available from our help desk (24 hrs. x 7 days a week) for all after sales assistance.

KOEL Sales Offices

- **Ahmedabad** : Ground Floor, D Block, Pruthvi Tower, Jodhpur Char Rasta, Ahmedabad - 380015. Phone : +91 (79) 2692 9687, 2692 9689. ● **Bangalore** : 3rd Floor, Shri Lakshmi Complex, 15, St. Marks Road, Bangalore - 560 001. Phone : +91 (80) 2558 7562, 30578164, 30578165. Fax : +91 (80) 2558 7559. ● **Bhubaneswar** : 178 A, Zone-B, Mancheswar Industrial Estate, Bhubaneswar-751010, Orissa. Phone : +91 (674) 2585064, 2586059, 2588047. Telefax : +91 (674) 2588021. ● **Chennai** : Nelson Tower, 1st Floor, 2nd Wing, 51, Nelson Manickam Road, Chennai - 600 029. Phone : + 91 (44) 23744661, 23744624. ● **Cochin** : No. 39/2694 A1, Anugraha, Panthiyil Lane, Warrian Road, Cochin - 682016. Phone : +91 (484) 2385757, 2385758. Fax: +91 (484) 2385756. ● **Guwahati** : 29, G & B Road, Pan Bazaar, Guwahati - 781 001. Phone : +91 (361) 2736016, 2736017. Telefax : +91 (361) 2736015. ● **Indore** : 203, Goldstar Complex, Opp Treasure Island, 576, MG Road, Indore - 452001. Phone : +91 (731) 3913108, 3913109, 3913110, 3913111. Telefax : +91 (731) 3913112. ● **Jaipur** : 21, Sudarshan Pura, Industrial Area, Bais Godwn, Jaipur - 302006. Phone : +91 (141) 2210405, 2214149, 2214150. Fax : +91 (141) 2214149. ● **Kolkata** : 8th Floor, Poonam Building, Flat Nos. 8A & 8B, 5/2, Russel Street, Kolkata - 700 071. Phone : +91 (33) 2217 0858, 2217 0860, 2217 0861. Fax : +91 (33) 2217 0859. ● **Lucknow** : 498 / 143 KA, Faizabad Road, Near IT Collage Chauraha, Upper Floor of State Bank of Indore, Lucknow - 226 007. Phone : +91 (522) 2741440/42/43. Fax : +91 (522) 2741441. ● **Ludhiana** : Plot No. 12, NPC Tempo Union Street, Near Arjun Gas Godown Sherpur Chowk Ludhiana - 141003. Phone : +91 (161) 254 6667, 2546669. Fax : +91 (161) 2546753. ● **New Delhi** : 404, 4th Floor, Surya Kiran Building, 19, Kasturba Gandhi Marg, New Delhi-110001. Phone : +91 (11) 23711786, 47195200, 47195202, 47195217, 47195205. Fax : +91 (11) 23710159. ● **Secunderabad** : 5-2-220 to 222, 2nd Floor, Padmavathi Tower, Hyder Basti, Opp. Andhra Bank, Ranigunj, Secunderabad- 500003. Phone : +91 (40) 27534197, 27534176. Telefax : +91 (40) 27534170.



KIRLOSKAR OIL ENGINES LIMITED

Laxmanrao Kirloskar Road, Khadki, Pune 411 003 INDIA.
Tel. : +91(20) 2581 0341
Fax : +91(20) 2581 3208, 25810209

www.kirloskar.com

Enriching Lives